

# REVITIVE

## Aerosure User's Manual



**Drug-Free  
Clinically Proven  
Certified Medical Device**



**Please read the User's Manual  
carefully before using this product**

You should also consult with your  
healthcare professional before use

- If you have an existing  
medical condition
- If you are unsure about the  
suitability of Revitive Aerosure or  
the cause of your symptoms

### **USE ONLY AS DIRECTED**

If symptoms persist, consult  
your healthcare professional

Model number: 3481AJ

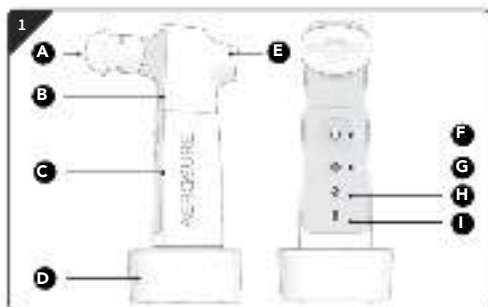
**BREATHING RELIEF**



## Parts & controls

Upon opening the carton, please check that the following components are provided.

If anything is missing, contact us free on our helpline number **0845 871 5989** or visit **[www.revitive.com](http://www.revitive.com)**



- A** Mouthpiece
- B** Valve Head
- C** Handle
- D** Charger
- E** Vent
- F** On/Off button and Mode selection button
- G** Mucus Relief Mode Indicator
- H** Breathe Easier Mode Indicator
- I** Charger Indicator

## Important safeguards



### Do not use if you (contraindications):

- Are pregnant
- Have epilepsy
- Are coughing up blood (Active haemoptysis)
- Have acute sinusitis or an active nosebleed
- Have a broken rib until this is completely healed
- Have recently had thoracic (chest) or upper gastrointestinal tract (duodenum, stomach, oesophagus) surgery or trauma until completely healed
- Currently have or previously had a collapsed lung (Pneumothorax)
- Have abnormally high or low blood pressure, very slow or very fast heart rate (Haemodynamic instability including severe right-sided heart failure with hypotension)
- Currently have a blood clot in the blood vessels in the lungs (Current Pulmonary embolism)
- Have enlarged veins in the oesophagus (Oesophageal varices)
- Had recent dental, head, neck, ear, nose & throat surgery or trauma until completely healed
- Have abnormally high pressure in the skull and brain (Raised intracranial pressure)
- Are experiencing a sudden worsening of breathlessness. For example (but not limited to) exacerbations of asthma.

# Important safeguards

---



## Warnings (continued)

- If you experience a sore or dry throat, stop using the device until these symptoms go away or try drinking some water. If symptoms persist, consult your doctor.
- Do not use attachments which are not recommended by the manufacturer.
- This product is not intended for use by children or persons with reduced physical, sensory or mental capabilities, unless they are supervised by a person responsible for their safety.
- Keep the product out of the reach of children.
- Clean the Valve Head and mouthpiece prior to first use [see page 17].
- Always unplug before cleaning.
- Do not submerge the handle or charger in water or other liquid.
- Do not place or store the charger where it can fall or be pulled into water or other liquids.
- Do not reach for a charger that has fallen into water or other liquids. Unplug immediately.
- Do not touch the power plug with wet hands. This can cause an electric shock.
- Do not use if the adaptor or cord is damaged. If the cord is damaged, contact your local distributor. The power cord is not intended for repair by service personnel. If damaged the whole charger unit will require replacement.

# Instructions for use

## Step 1 :

### Powering Revitive Aerosure



**IMPORTANT:** Revitive Aerosure will require a full charge prior to first use, approximately 12 hours.

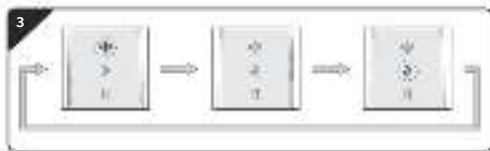


The charger plug is intended as the means of isolation from the mains supply. Do not position the plug or charger in a position where it is difficult to disconnect from the mains supply.



- Plug the charger (D) into an electrical outlet.
- Place the handle unit (C) onto the charger base [see picture 2].

- The treatment mode indicator lights (G) (H) will flash repeatedly in sequence to indicate the unit is charging [see picture 3].



## Instructions for use



### Breathe Easier Mode:

Turn the product on by pressing and holding the Power Button for 2 seconds [see picture 5].

- Press the power button once more.
- You will also hear the motor and Valve Head begin to rotate.
- The Breathe Easier Mode indicator will now be illuminated [see picture 6].
- Place the Mouthpiece (A) in your mouth.



- **Breathe as hard as you are comfortably able to, through the Mouthpiece (A) for five minutes, 3 times per day.**
- Once your session is complete, turn off the product by pressing the Power Button (F) to cycle through the modes until the motor stops.

**Note:** There is no separate OFF light. The product is off when none of the indicators are illuminated.

# Instructions for use

## Step 3 :

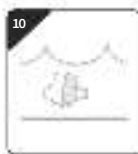
### Re-charging Revitive Aerosure



- If the rechargeable battery is low, the red low charge indicator light (I) will flash when the product is in use [see picture 8]. Stop using the product and put it on charge. [See Step 2: Powering Revitive Aerosure]
- If the rechargeable battery is empty, the motor will stop. Revitive Aerosure will not respond when the power button is pressed, and will need recharging.
- A full charge will take approximately twelve hours.



## Instructions for use



Leave Valve Head to soak in solution for the minimum time specified by the disinfectant solution instructions [see picture 10].

After the specified soak time has passed remove the mouthpiece and Valve Head from solution, rinse with clean water and drain. Allow to air dry for at least 2 hours – to ensure head drains adequately. Ensure that it is standing on the rear vent opening [see picture 11].

<sup>1</sup>NOTE: The Valve Head has been tested using disinfectant solutions with the following active ingredient:

- Sodium hypochlorite (CAS: 7681-52-9) 2% w/w diluted and used in line with the manufacturer's directions.
- Sodium dichloroisocyanurate (CAS: 2893-78-9) 19.5% w/w diluted and used in line with the manufacturer's directions.

# Instructions for use

## Replacement Heads



Replacement Valve Heads are available for your Revitive Aerosure and it is recommended that you replace the Valve Head at least once every 6 months.

Replacement heads are available through your local Revitive Aerosure retailer or distributor, or from the Revitive website.

Please ask for the following part reference.

Revitive Aerosure Replacement Head Item Ref 1377.

## Storing Revitive Aerosure

Store in a dry, dust-free location in temperatures between -18°C and 50°C and 25% to 85% relative humidity.

## Environmental Notice (Battery)


This product contains rechargeable batteries. In the interest of protecting the environment, please do not dispose of the product in the household waste at the end of its useful life. Disposal can take place by either returning to your local distributor or at approved recycling or disposal locations in accordance with local regulations.


# Technical Specifications


In order to regulate the requirements for EMC, with the aim to prevent unsafe product situations, the IEC/EN 60601-1-2 and IEC/EN 60601-1-11 standards have been implemented. These standards define the levels of immunity to electromagnetic interference as well as the maximum levels of electromagnetic emissions for medical devices.

Revitive devices are intended for use in the home setting without the need for involvement of a clinical professional during treatment. On occasion the device may also be used in a hospital environment. In this environment use near the following equipment should be avoided:

- active High Frequency Surgical Equipment
- radio frequency shielded rooms for magnetic resonance imaging (where the intensity of Electro Magnetic Disturbances is high).

 **WARNING:** Use of this equipment adjacent to or stacked with other equipment should be avoided because it could result in improper operation. If such use is necessary, this equipment and the other equipment should be observed to verify that they are operating normally.

 **WARNING:** Use of accessories and cables other than those specified or provided by Actegy Ltd for this equipment could result in increased electromagnetic emissions or decreased electromagnetic immunity of this equipment and result in improper operation.

 **WARNING:** Wireless communications equipment such as wireless network devices, mobile phones, cordless telephones and their base stations can affect this equipment and should be used no closer than 30 cm (12 inches) to any part of the Revitive Aerosure, including cables specified by Actegy Ltd. Otherwise, degradation of the performance of this equipment could result.

**NOTE:** The EMISSIONS characteristics of this equipment make it suitable for use in industrial areas and hospitals (CISPR 11 class A). If it is used in a residential environment (for which CISPR 11 class B is normally required) this equipment might not offer adequate protection to radio-frequency communication services. The user might need to take mitigation measures, such as relocating or re-orienting the equipment.

## Your 2-year warranty

It is important to retain the retailer's receipt as proof of purchase; we suggest you staple your receipt to this manual for future reference.

In the unlikely event of your product proving to be faulty within 28 days of purchase it should be returned to the place where you bought it. If a fault develops after this period we grant a 2-year limited guarantee on the product commencing on the date of purchase.

Within the guarantee period we will eliminate, free of charge, any defects in the product resulting from faults in materials or workmanship, either by repairing or replacing the complete product as we may choose.

To obtain service within the guarantee period contact your local distributor. You will be asked to return the product (in secure, adequate packaging) together with a copy of proof of purchase. Subject to the exclusions set out on page 23 (see Exclusions) the faulty product will then be repaired or replaced within 7 working days of receipt. The guarantee extends to every country where this product is supplied by Actegy or its appointed distributor.

If, for any reason, the product is replaced during the 2-year guarantee period, the guarantee on the new item will be calculated from the original purchase date.

# REVITIVE.

## Aerosure.



**Actegy Ltd**

1 West Point, Western Road  
Bracknell, RG12 1HJ  
United Kingdom

Tel: +44 (0)800 014 6377



**MDSS**

Schiffgraben 41  
30175 Hannover, Germany.

### Distributor

#### UK:

Actegy Ltd  
1 West Point, Western Road  
Bracknell, RG12 1HJ  
United Kingdom

[www.revitive.com](http://www.revitive.com)

Tel: +44 (0)800 014 6377

[info.uk@actegy.com](mailto:info.uk@actegy.com)

Copyright © 2021 Actegy Ltd. All rights reserved. Actegy®, Revitive® and Aerosure® are registered trademarks of Actegy Ltd. The Revitive Aerosure product is a proprietary design and is protected by applicable design laws.

AW 3465\_IFU04\_17897708 P.D 02.2021



BREATHING RELIEF

[www.revitive.com](http://www.revitive.com)